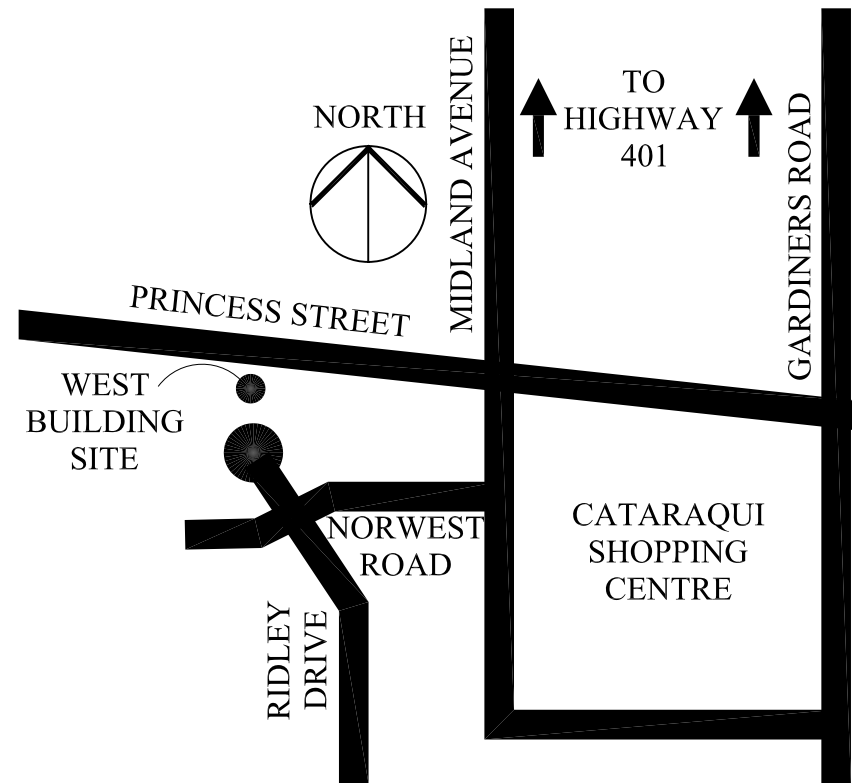


# L'Hermitage *West*

Luxury Apartments  
Spacious One and Two Bedroom Suites  
Spectacular Views  
A/C and Utilities Included  
3 appliances  
Secure Building  
Fully Equipped Fitness Room  
Main Floor Laundry  
Furnished Hospitality Room

Prime Township Location  
Within walking distance of:

- Bus Routes
- 2 Parks
- Shopping
- Restaurants
- Public Library



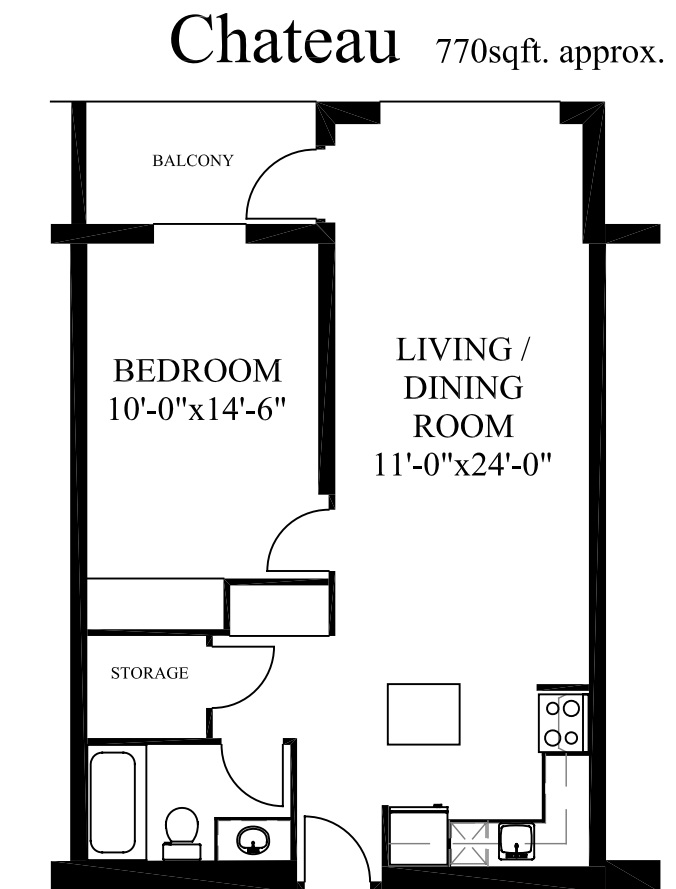
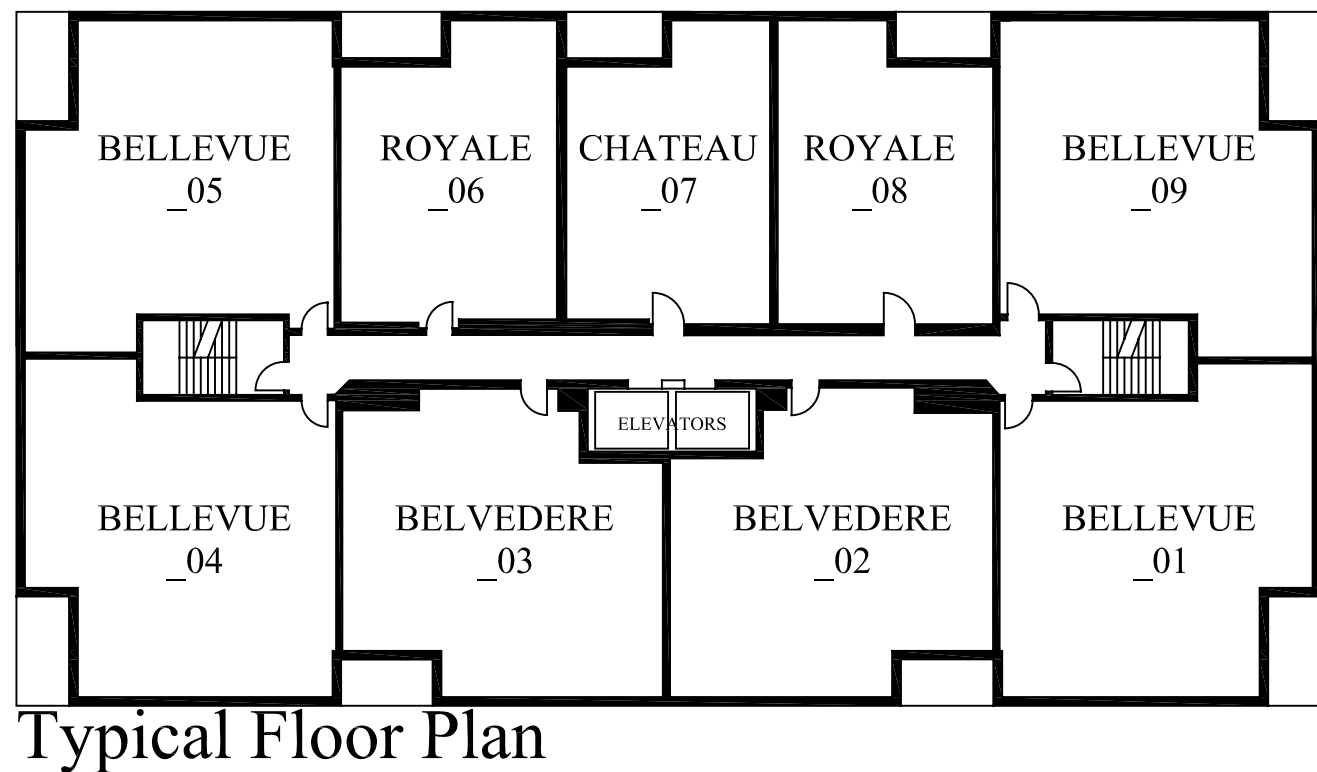
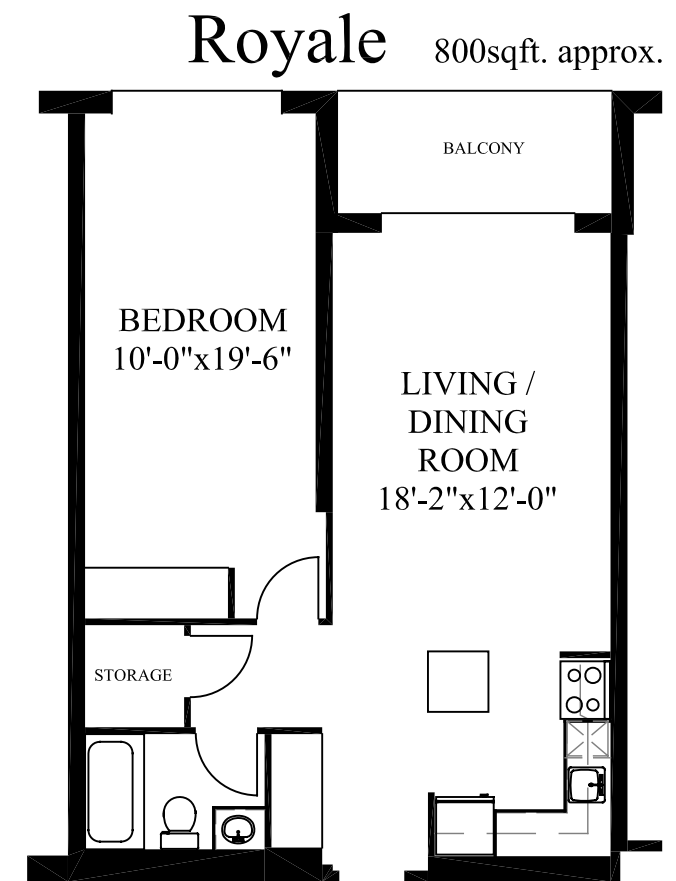
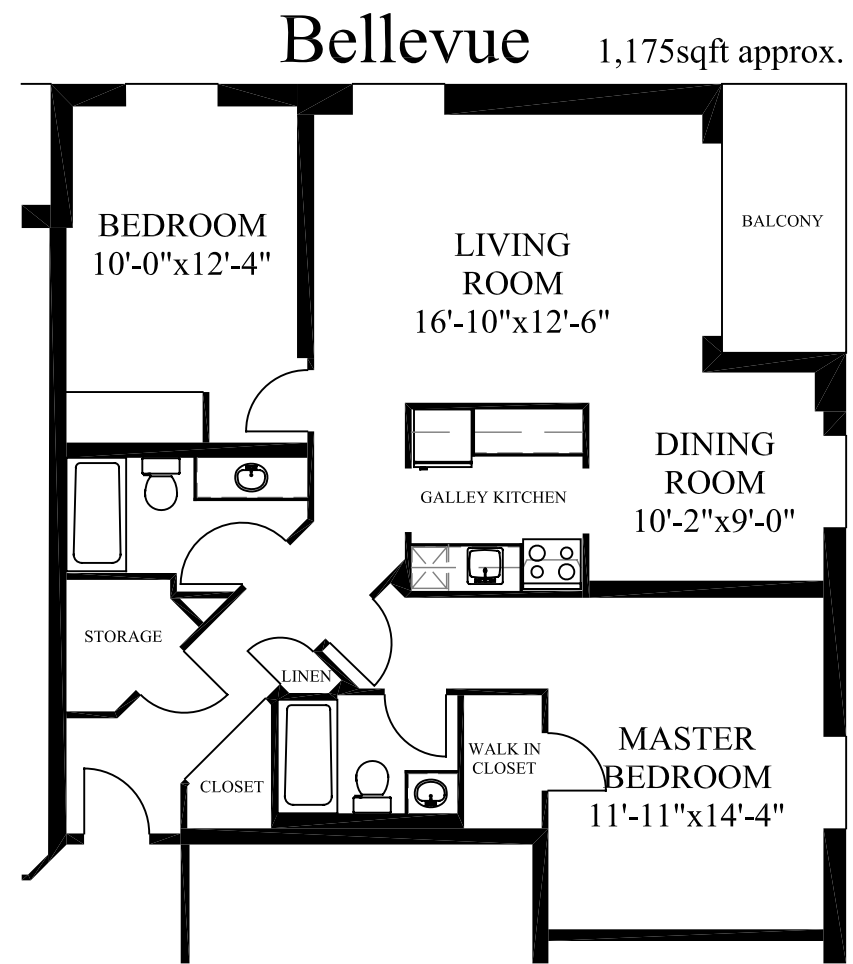
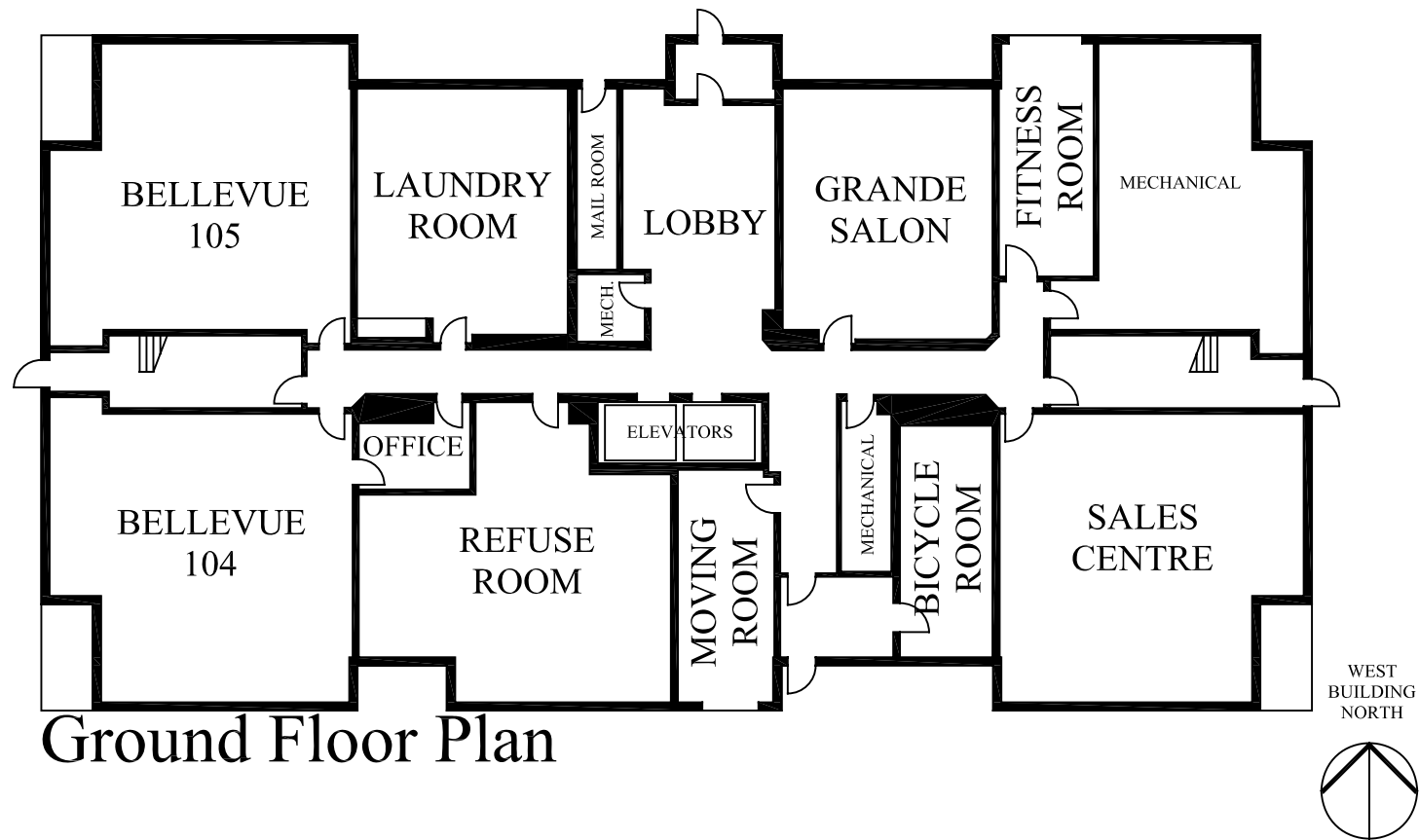
Contact (613) 546-6277  
[www.cjmproperty.net](http://www.cjmproperty.net)

# L'Hermitage *West*



Inclusive One and Two Bedrooms

2727 Princess Street  
Superintendent Julie: (613) 561-9558  
Office: (613) 546-6277  
[www.cjmproperty.net](http://www.cjmproperty.net)

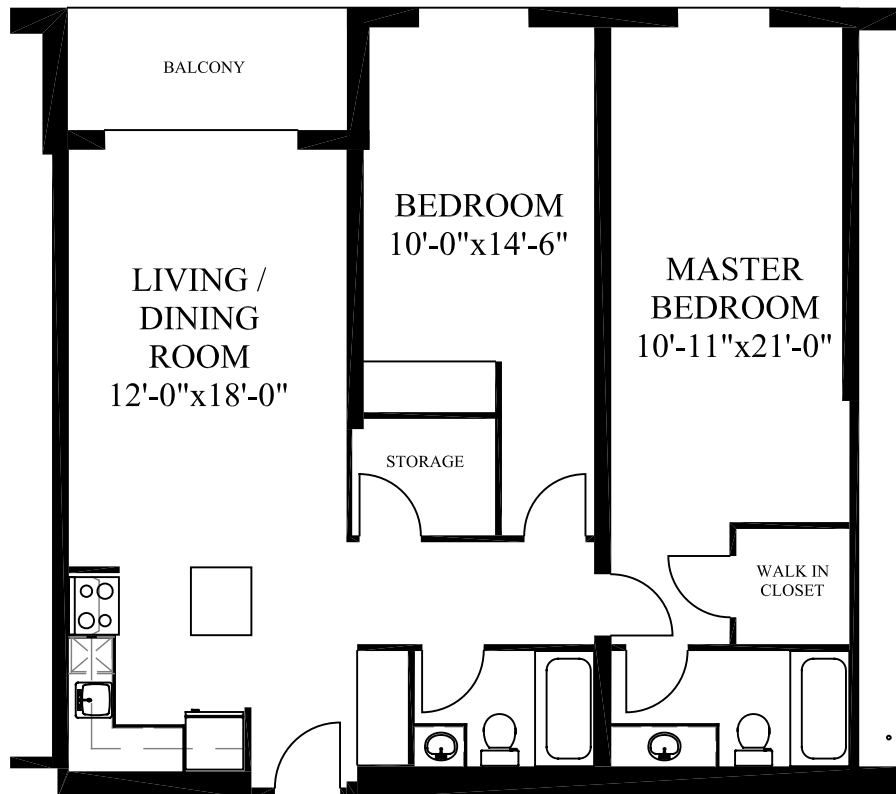


Contact (613) 546-6277  
[www.cjmproperty.net](http://www.cjmproperty.net)

Plans and dimensions are approximate and are subject to change without notice. Areas are based on gross square footage including balcony. Unit orientation may be mirrored/rotated. Subject to Errors and Omitted Errors review.

Plans and dimensions are approximate and are subject to change without notice. Areas are based on gross square footage including balcony. Unit orientation may be mirrored/rotated. Subject to Errors and Omitted Errors review.

# Premiere Suite (\_06)



Contact (613) 546-6277  
[www.cjmproperty.net](http://www.cjmproperty.net)

Plans and dimensions are approximate and are subject to change without notice. Areas are based on gross square footage including balcony. Unit orientation may be mirrored/rotated. Subject to Errors and Omitted Errors review.

# Premiere Suite (\_07)



Contact (613) 546-6277  
[www.cjmproperty.net](http://www.cjmproperty.net)

Plans and dimensions are approximate and are subject to change without notice. Areas are based on gross square footage including balcony. Unit orientation may be mirrored/rotated. Subject to Errors and Omitted Errors review.