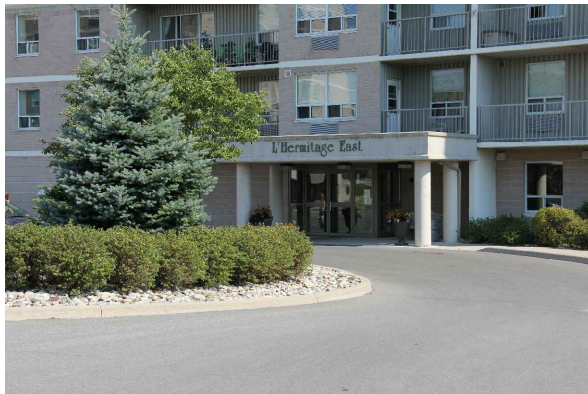


# L'HERMITAGE EAST

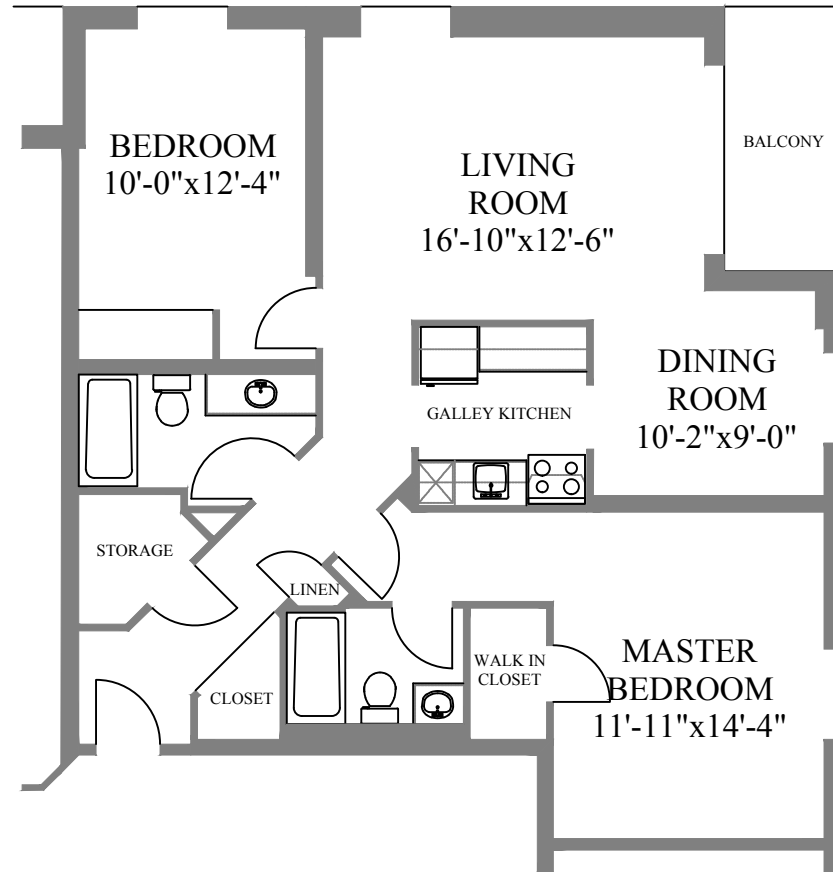
860 NORWEST RD

PRICE:

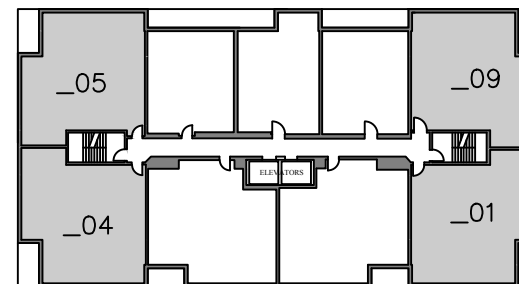
AVAILABLE:



[WWW.CJMPROPERTY.NET](http://WWW.CJMPROPERTY.NET)



BELLEVUE SUITE  
1175 sqft



TYPICAL FLOOR PLAN

## SUITE FEATURES

- 2 Bedroom + 2 bath
- Heat, water & electricity included
- Parking space included
- In-suite storage
- Private balcony
- Pet friendly
- Elevator access
- Laundry Facilities
- Wheelchair accessible

## APPLICATION

- 1-year lease
- First & last month's rent (certified cheque, money order or bank draft)
- Current address & landlord info
- Current employment and verification of income
- Vehicle information
- Pet information
- One personal reference
- One emergency contact

To apply for one of our suites, contact:

Ashley Blommestyn, Rental Agent  
ashley@caraco.net  
(613) 546-6277 | CELL: (613) 536-8280



Full-time On-site Superintendent (613) 561-7895

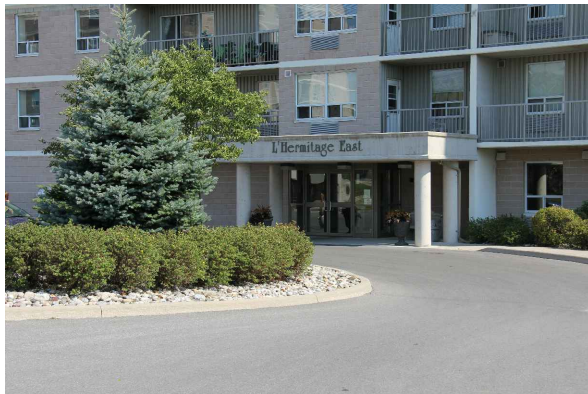
Plans, dimension and actual usable floor space are approximate and may vary. Some suites may be a mirror image (reversed) from the brochure. Subject to errors and omissions excepted.

# L'HERMITAGE EAST

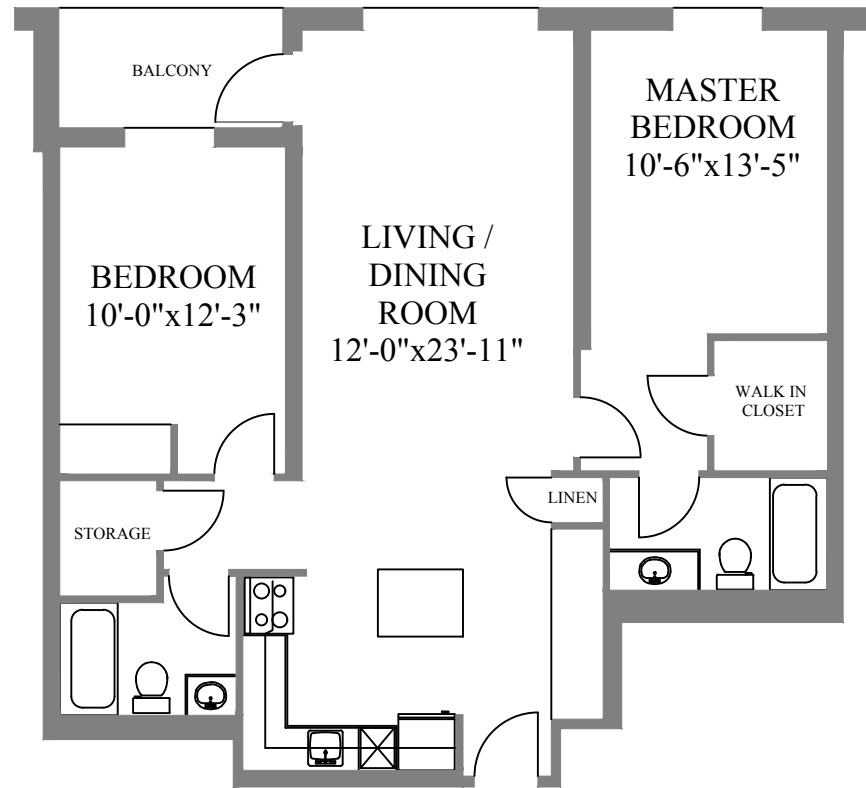
860 NORWEST RD

PRICE:

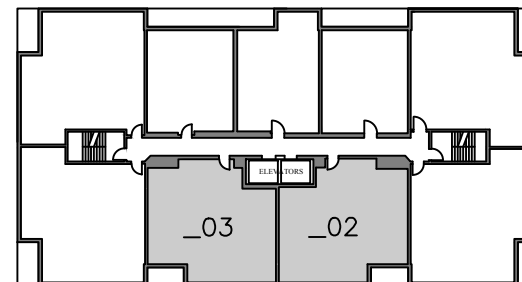
AVAILABLE:



[WWW.CJMPROPERTY.NET](http://WWW.CJMPROPERTY.NET)



BELVEDERE SUITE  
1105 sqft



TYPICAL FLOOR PLAN

Plans, dimension and actual usable floor space are approximate and may vary. Some suites may be a mirror image (reversed) from the brochure. Subject to errors and omissions excepted.

## SUITE FEATURES

- 2 Bedroom + 2 bath
- Heat, water & electricity included
- Parking space included
- In-suite storage
- Private balcony
- Pet friendly
- Elevator access
- Laundry Facilities
- Wheelchair accessible

## APPLICATION

- 1-year lease
- First & last month's rent (certified cheque, money order or bank draft)
- Current address & landlord info
- Current employment and verification of income
- Vehicle information
- Pet information
- One personal reference
- One emergency contact

To apply for one of our suites, contact:

Ashley Blommestyn, Rental Agent  
ashley@caraco.net  
(613) 546-6277 | CELL: (613) 536-8280



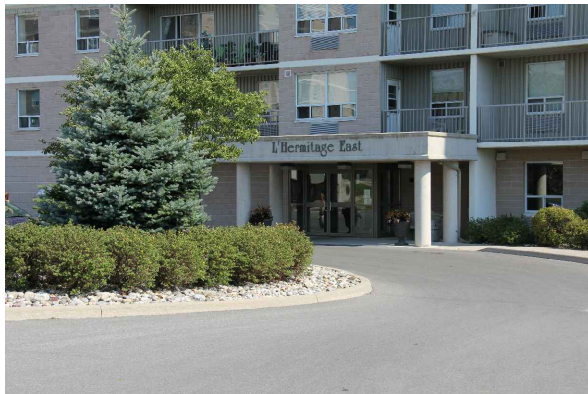
Full-time On-site Superintendent (613) 561-7895

# L'HERMITAGE EAST

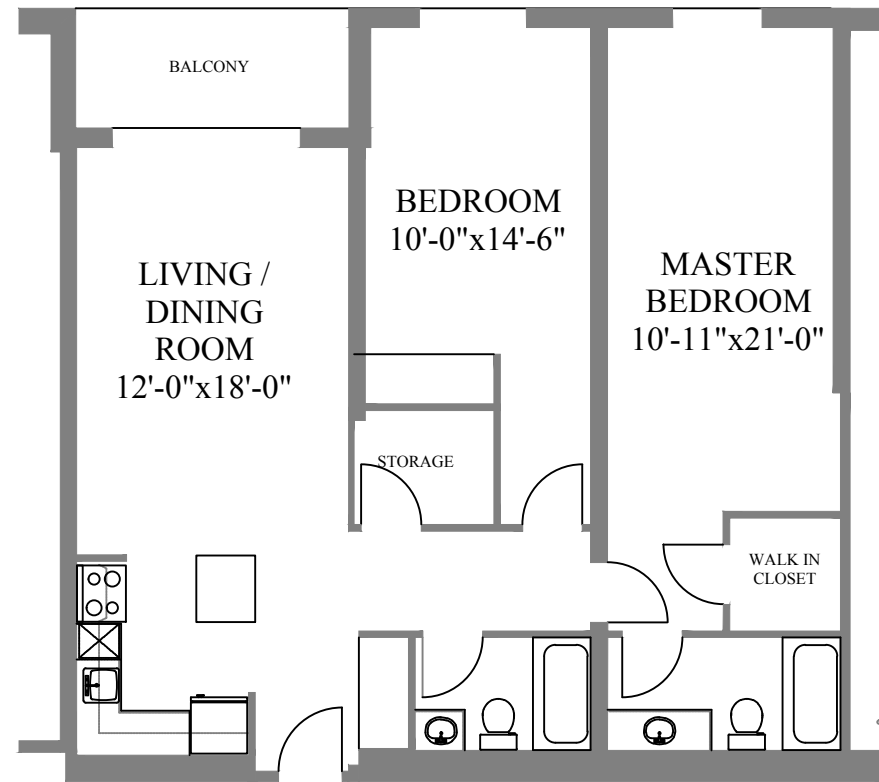
860 NORWEST RD

PRICE:

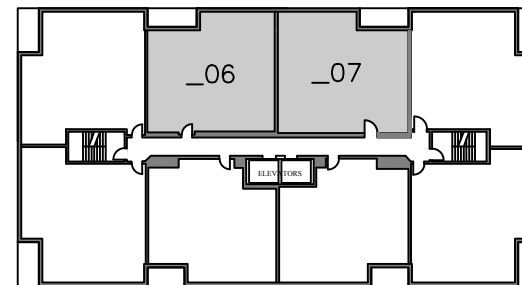
AVAILABLE:



[WWW.CJMPROPERTY.NET](http://WWW.CJMPROPERTY.NET)



PREMIERE SUITE  
1120 sqft



13th AND 14th FLOOR

## SUITE FEATURES

- 1 Bedroom + 1 bath
- Heat, water & electricity included
- Parking space included
- In-suite storage
- Private balcony
- Pet friendly
- Elevator access
- Laundry Facilities
- Wheelchair accessible

## APPLICATION

- 1-year lease
- First & last month's rent (certified cheque, money order or bank draft)
- Current address & landlord info
- Current employment and verification of income
- Vehicle information
- Pet information
- One personal reference
- One emergency contact

To apply for one of our suites, contact:

Ashley Blommestyn, Rental Agent  
ashley@caraco.net  
(613) 546-6277 | CELL: (613) 536-8280



Plans, dimension and actual usable floor space are approximate and may vary. Some suites may be a mirror image (reversed) from the brochure. Subject to errors and omissions excepted.

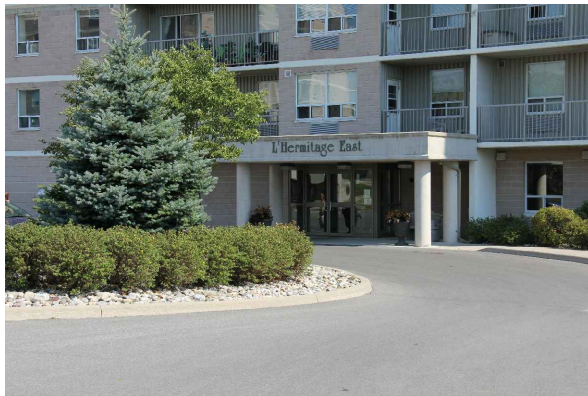
Full-time On-site Superintendent (613) 561-7895

# L'HERMITAGE EAST

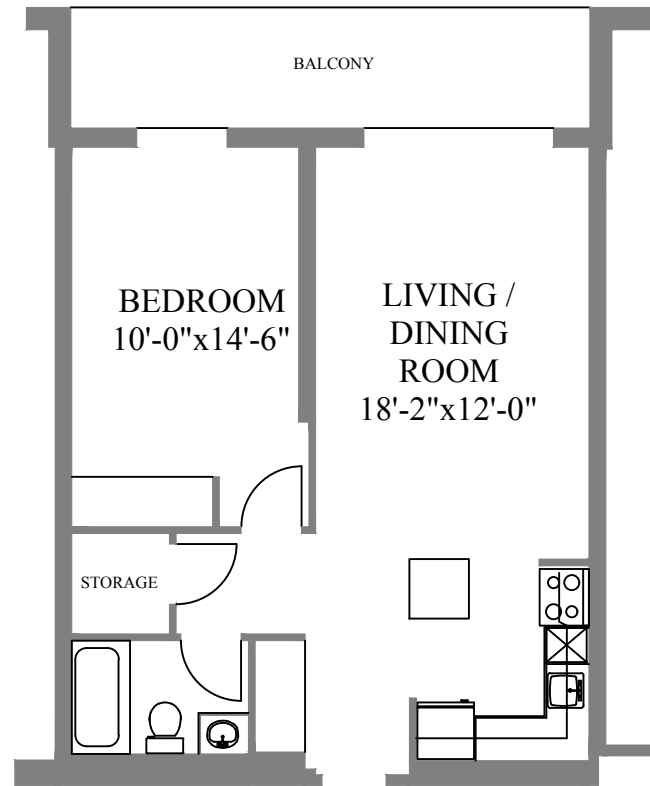
860 NORWEST RD

PRICE:

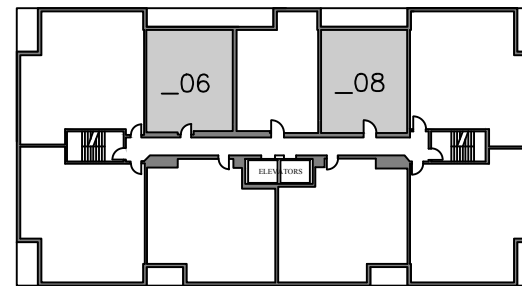
AVAILABLE:



[WWW.CJMPROPERTY.NET](http://WWW.CJMPROPERTY.NET)



ROYALE SUITE  
800 sqft



TYPICAL FLOOR PLAN

Plans, dimension and actual usable floor space are approximate and may vary. Some suites may be a mirror image (reversed) from the brochure. Subject to errors and omissions excepted.

## SUITE FEATURES

- 1 Bedroom + 1 bath
- Heat, water & electricity included
- Parking space included
- In-suite storage
- Private balcony
- Pet friendly
- Elevator access
- Laundry Facilities
- Wheelchair accessible

## APPLICATION

- 1-year lease
- First & last month's rent (certified cheque, money order or bank draft)
- Current address & landlord info
- Current employment and verification of income
- Vehicle information
- Pet information
- One personal reference
- One emergency contact

To apply for one of our suites, contact:

Ashley Blommestyn, Rental Agent  
ashley@caraco.net  
(613) 546-6277 | CELL: (613) 536-8280



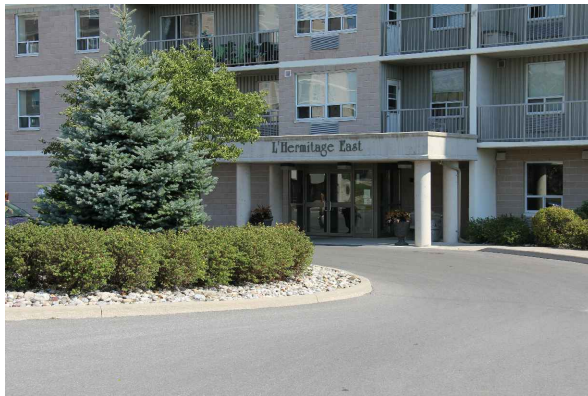
Full-time On-site Superintendent (613) 561-7895

# L'HERMITAGE EAST

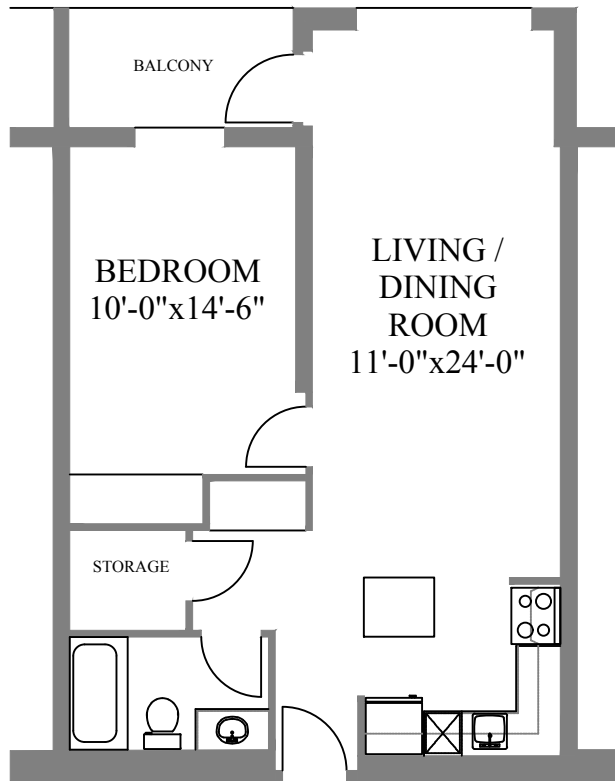
860 NORWEST RD

PRICE:

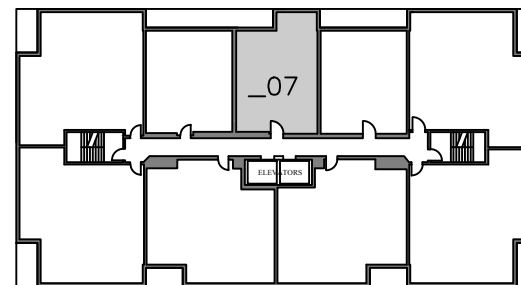
AVAILABLE:



[WWW.CJMPROPERTY.NET](http://WWW.CJMPROPERTY.NET)



CHATEAU SUITE  
770 sqft



TYPICAL FLOOR PLAN

Plans, dimension and actual usable floor space are approximate and may vary. Some suites may be a mirror image (reversed) from the brochure. Subject to errors and omissions excepted.

## SUITE FEATURES

- 1 Bedroom + 1 bath
- Heat, water & electricity included
- Parking space included
- In-suite storage
- Private balcony
- Pet friendly
- Elevator access
- Laundry Facilities
- Wheelchair accessible

## APPLICATION

- 1-year lease
- First & last month's rent (certified cheque, money order or bank draft)
- Current address & landlord info
- Current employment and verification of income
- Vehicle information
- Pet information
- One personal reference
- One emergency contact

To apply for one of our suites, contact:

Ashley Blommestyn, Rental Agent  
ashley@caraco.net  
(613) 546-6277 | CELL: (613) 536-8280



Full-time On-site Superintendent (613) 561-7895