

# THE DORCHESTER

650 SIR JOHN A. MACDONALD BLVD.

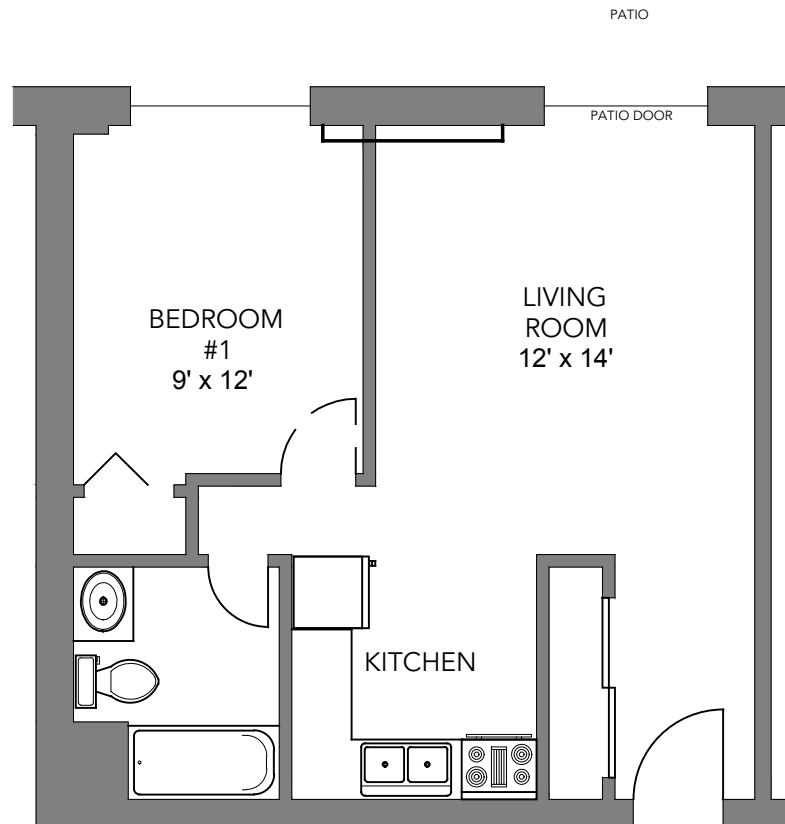
PRICE:



AVAILABLE:



[WWW.CJMPROPERTY.NET](http://WWW.CJMPROPERTY.NET)



Suite 100 543sqft



Plans, dimension and actual usable floor space are approximate and may vary. Subject to errors and omissions excepted.

## SUITE FEATURES

- 1 Bedroom + 1 Bath
- Heat & water included (electricity is extra)
- Parking space included
- In-suite storage
- Private balcony
- Pet friendly
- Elevator access
- Main floor high-efficiency laundry room
- Wheelchair accessible

## APPLICATION

- 1-year lease
- First & last month's rent (certified cheque, money order, bank draft, or cash)
- Current address & landlord info
- Current employment and/or income
- Vehicle information
- Pet information
- One personal reference
- One emergency contact

To apply for one of our suites, contact:

Ashley Blommestyn, Rental Agent  
ashley@caraco.net  
(613) 536-8280



Full-time On-site Superintendent (613) 876-1044

# THE DORCHESTER

650 SIR JOHN A. MACDONALD BLVD.

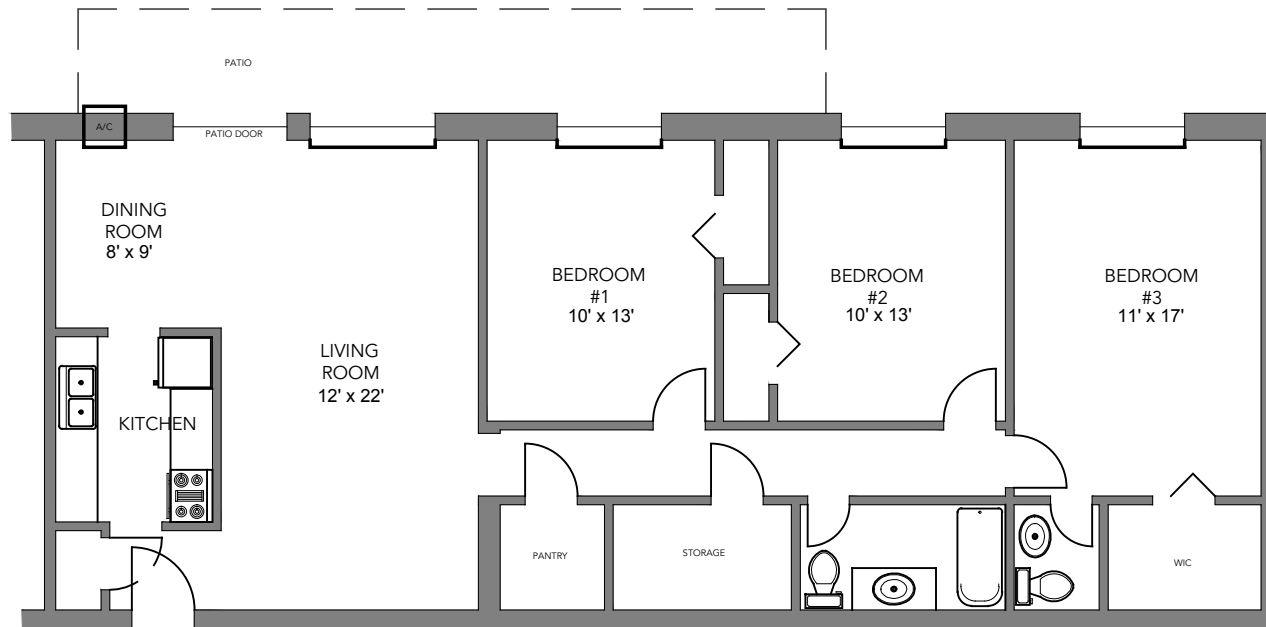
PRICE:



AVAILABLE:



[WWW.CJMPROPERTY.NET](http://WWW.CJMPROPERTY.NET)



Suite 101 1,380sqft



Plans, dimension and actual usable floor space are approximate and may vary. Subject to errors and omissions excepted.

## SUITE FEATURES

- 3 Bedroom + 2 Bath
- Heat & water included (electricity is extra)
- Parking space included
- In-suite storage
- Private balcony
- Pet friendly
- Elevator access
- Main floor high-efficiency laundry room
- Wheelchair accessible

## APPLICATION

- 1-year lease
- First & last month's rent (certified cheque, money order, bank draft, or cash)
- Current address & landlord info
- Current employment and/or income
- Vehicle information
- Pet information
- One personal reference
- One emergency contact

To apply for one of our suites, contact:

Ashley Blommestyn, Rental Agent  
ashley@caraco.net  
(613) 536-8280



Full-time On-site Superintendent (613) 876-1044

# THE DORCHESTER

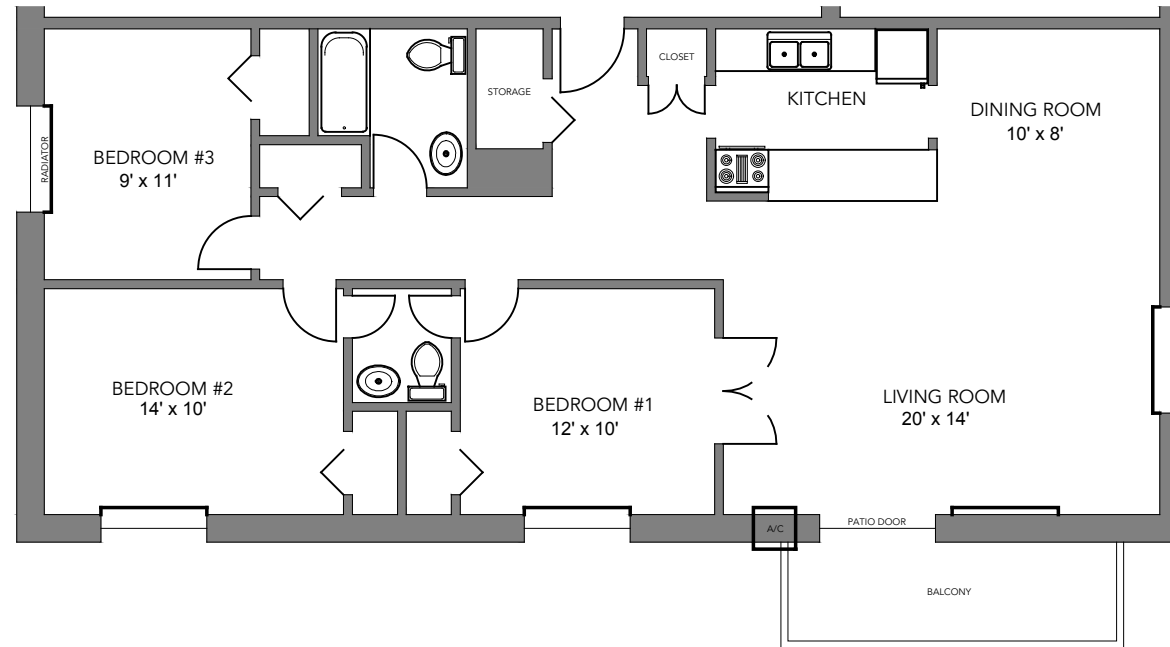
650 SIR JOHN A. MACDONALD BLVD.

PRICE:

AVAILABLE:



WWW.CJMPROPERTY.NET



Suite\_01 1,342sqft  
(Typical for floors 2 through 5)



Plans, dimension and actual usable floor space are approximate and may vary. Subject to errors and omissions excepted.

## SUITE FEATURES

- 3 Bedroom + 2 Bath
- Heat & water included (electricity is extra)
- Parking space included
- In-suite storage
- Private balcony
- Pet friendly
- Elevator access
- Main floor high-efficiency laundry room
- Wheelchair accessible

## APPLICATION

- 1-year lease
- First & last month's rent (certified cheque, money order, bank draft, or cash)
- Current address & landlord info
- Current employment and/or income
- Vehicle information
- Pet information
- One personal reference
- One emergency contact

To apply for one of our suites, contact:

Ashley Blommestyn, Rental Agent  
ashley@caraco.net  
(613) 536-8280



Full-time On-site Superintendent (613) 876-1044

# THE DORCHESTER

650 SIR JOHN A. MACDONALD BLVD.

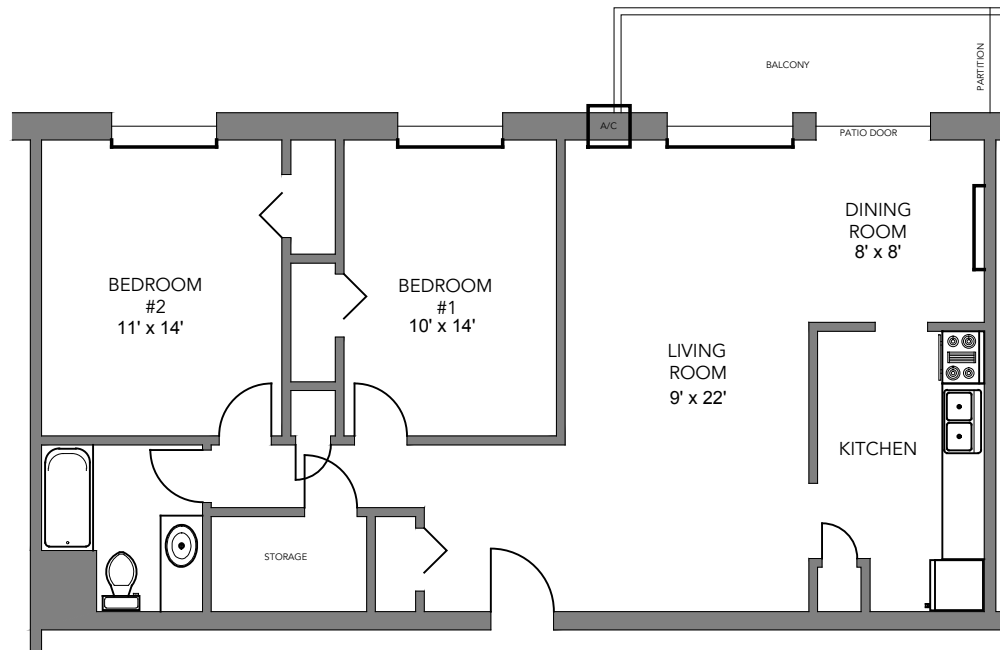
PRICE:



AVAILABLE:



[WWW.CJMPROPERTY.NET](http://WWW.CJMPROPERTY.NET)



Suite\_02 1,074sqft  
(Typical for floors 2 through 5)



Plans, dimension and actual usable floor space are approximate and may vary. Subject to errors and omissions excepted.

## SUITE FEATURES

- 2 Bedroom + 1 Bath
- Heat & water included (electricity is extra)
- Parking space included
- In-suite storage
- Private balcony
- Pet friendly
- Elevator access
- Main floor high-efficiency laundry room
- Wheelchair accessible

## APPLICATION

- 1-year lease
- First & last month's rent (certified cheque, money order, bank draft, or cash)
- Current address & landlord info
- Current employment and/or income
- Vehicle information
- Pet information
- One personal reference
- One emergency contact

To apply for one of our suites, contact:

Ashley Blommestyn, Rental Agent  
ashley@caraco.net  
(613) 536-8280



Full-time On-site Superintendent (613) 876-1044



# THE DORCHESTER

650 SIR JOHN A. MACDONALD BLVD.

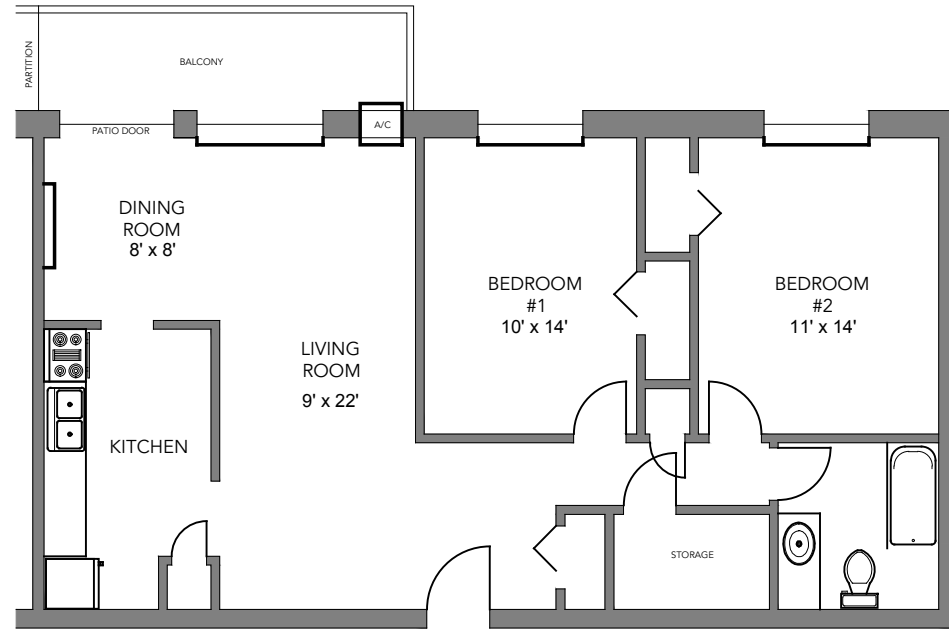
PRICE:



AVAILABLE:



[WWW.CJMPROPERTY.NET](http://WWW.CJMPROPERTY.NET)



Suite\_03 1,021sqft  
(Typical for floors 2 through 5)



Plans, dimension and actual usable floor space are approximate and may vary. Subject to errors and omissions excepted.

## SUITE FEATURES

- 2 Bedroom + 1 Bath
- Heat & water included (electricity is extra)
- Parking space included
- In-suite storage
- Private balcony
- Pet friendly
- Elevator access
- Main floor high-efficiency laundry room
- Wheelchair accessible

## APPLICATION

- 1-year lease
- First & last month's rent (certified cheque, money order, bank draft, or cash)
- Current address & landlord info
- Current employment and/or income
- Vehicle information
- Pet information
- One personal reference
- One emergency contact

To apply for one of our suites, contact:

Ashley Blommestyn, Rental Agent  
ashley@caraco.net  
(613) 536-8280



Full-time On-site Superintendent (613) 876-1044

# THE DORCHESTER

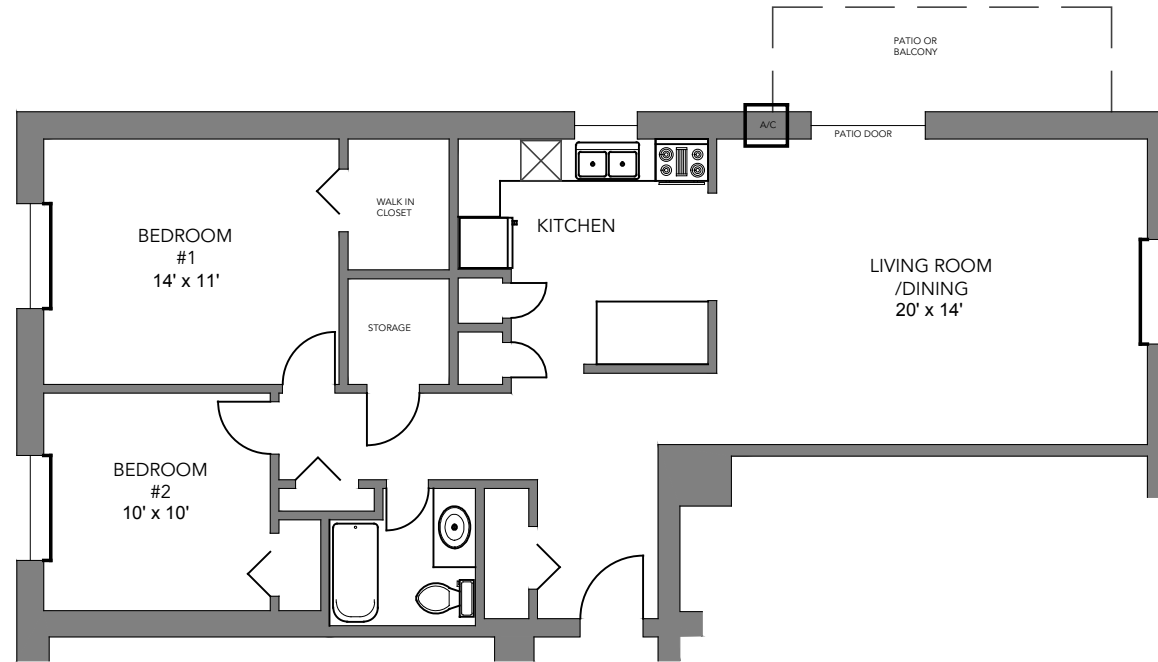
650 SIR JOHN A. MACDONALD BLVD.

PRICE:

AVAILABLE:



WWW.CJMPROPERTY.NET



Suite 102 and \_04 1,127sqft  
(Typical for floors 1 through 5)



Plans, dimension and actual usable floor space are approximate and may vary. Subject to errors and omissions excepted.

## SUITE FEATURES

- 2 Bedroom + 1 Bath
- Heat & water included (electricity is extra)
- Parking space included
- In-suite storage
- Private balcony
- Pet friendly
- Elevator access
- Main floor high-efficiency laundry room
- Wheelchair accessible

## APPLICATION

- 1-year lease
- First & last month's rent (certified cheque, money order, bank draft, or cash)
- Current address & landlord info
- Current employment and/or income
- Vehicle information
- Pet information
- One personal reference
- One emergency contact

To apply for one of our suites, contact:

Ashley Blommestyn, Rental Agent  
ashley@caraco.net  
(613) 536-8280



Full-time On-site Superintendent (613) 876-1044

# THE DORCHESTER

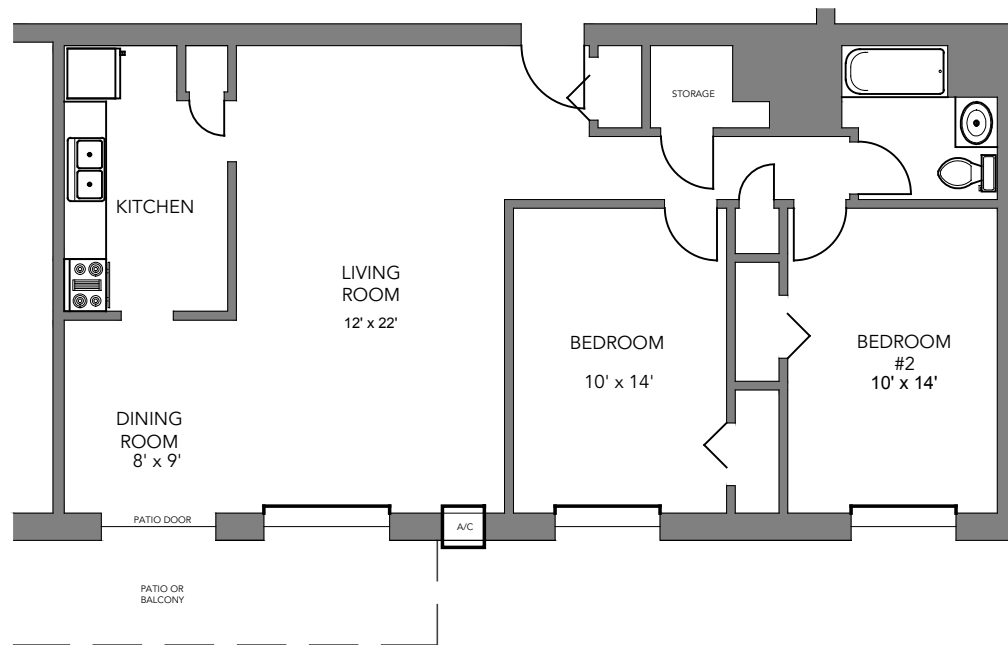
650 SIR JOHN A. MACDONALD BLVD.

PRICE:

AVAILABLE:



[WWW.CJMPROPERTY.NET](http://WWW.CJMPROPERTY.NET)



Suite\_05 1,068sqft  
(Typical for floors 1 through 5)



Plans, dimension and actual usable floor space are approximate and may vary. Subject to errors and omissions excepted.

## SUITE FEATURES

- 2 Bedroom + 1 Bath
- Heat & water included (electricity is extra)
- Parking space included
- In-suite storage
- Private balcony
- Pet friendly
- Elevator access
- Main floor high-efficiency laundry room
- Wheelchair accessible

## APPLICATION

- 1-year lease
- First & last month's rent (certified cheque, money order, bank draft, or cash)
- Current address & landlord info
- Current employment and/or income
- Vehicle information
- Pet information
- One personal reference
- One emergency contact

To apply for one of our suites, contact:

Ashley Blommestyn, Rental Agent  
ashley@caraco.net  
(613) 536-8280



Full-time On-site Superintendent (613) 876-1044

# THE DORCHESTER

650 SIR JOHN A. MACDONALD BLVD.

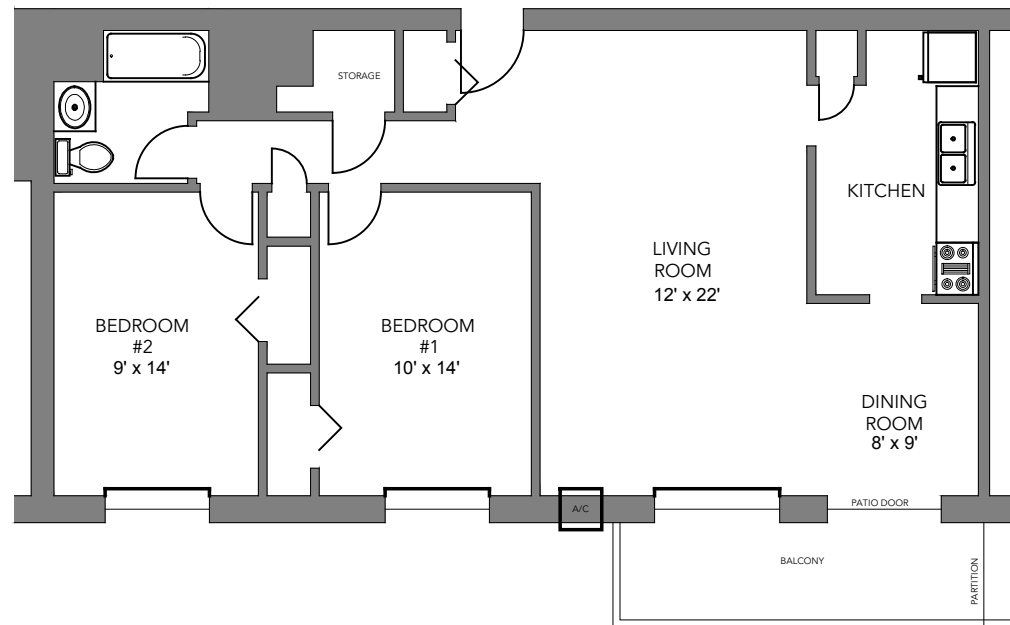
PRICE:



AVAILABLE:



[WWW.CJMPROPERTY.NET](http://WWW.CJMPROPERTY.NET)



Suite\_06 1,045sqft  
(Typical for floors 2 through 5)



Plans, dimension and actual usable floor space are approximate and may vary. Subject to errors and omissions excepted.

## SUITE FEATURES

- 2 Bedroom + 1 Bath
- Heat & water included (electricity is extra)
- Parking space included
- In-suite storage
- Private balcony
- Pet friendly
- Elevator access
- Main floor high-efficiency laundry room
- Wheelchair accessible

## APPLICATION

- 1-year lease
- First & last month's rent (certified cheque, money order, bank draft, or cash)
- Current address & landlord info
- Current employment and/or income
- Vehicle information
- Pet information
- One personal reference
- One emergency contact

To apply for one of our suites, contact:

Ashley Blommestyn, Rental Agent  
ashley@caraco.net  
(613) 536-8280



Full-time On-site Superintendent (613) 876-1044